



The condo

# Sea Side Condominium

Sea Isle City, New Jersey

Generously donated by: Elaine and Malcom Crooks

Phone: 215-297-8447



The front deck



Bedroom 1 - Queen



The side deck



Bedroom 2 - Queen

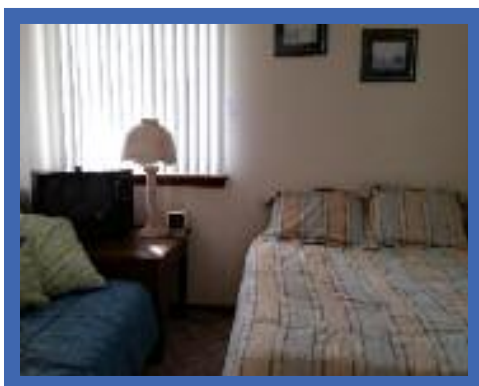
**Offer:** Two nights valued at \$500

**Sleeps:** 7 **Bedrooms:** 3 **Bathrooms:** 2

**Restrictions:** Sept-Oct '16, April-mid June '17  
subject to availability.



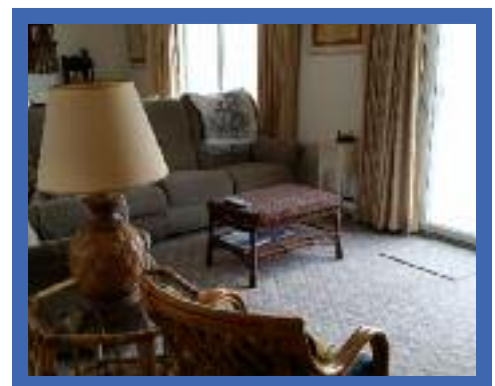
The back deck



Bedroom 3 - Double+S



Full kitchen with appliances



The living room

## Jersey Shore Getaway

This second floor condo in Sea Isle City is located just two blocks from beach and 20 minutes from Cape May. It features wraparound decks overlooking the bay and wetlands. Bedrooms 1 and 2 have queen beds and sliding doors opening to the deck. Bedroom 3 has a double bed as well as a single bed. There are three TVs, two DVDs, cable, free wi-fi and a gas grill. Blankets and pillows are provided, renters must bring their own towels and sheets. Two parking spaces are assigned to the condo.

Located in Historic Cape May County, Sea Isle City is a popular beach destination offering visitors an array of entertainment options, ranging from wonderful restaurants and nightlife to state-of-the-art recreation facilities and family attractions that truly offer something for everyone, including notable historical sites, Beachcomber Guided Tours and a 1.5-mile long oceanfront Promenade which features shops, eateries, arcades and breath-taking views of the Atlantic Ocean. Try your hand at kayaking, surfing, boating, parasailing – or just enjoy your favorite book as you relax on the sand.

Sea Isle's main attraction is, of course, its pristine shoreline. However, even though there are miles of clean, inviting beaches to explore, time on the sand is only one of many reasons to visit this resort. Sea Isle is also a haven for sportsmen and nature lovers. It's a short drive to the Wildlife Institute in Stone Harbor and spring and fall migration bring many varieties of birds through the wetlands. As many as 84 species have been counted from the condo's decks in just one October weekend. Anglers and birders alike appreciate Sea Isle's waterways and wetlands, coastal habitats at their finest!